



LORAIN COUNTY
CHILDREN SERVICES

ANNUAL REPORT TO THE COMMUNITY



2022

✉ www.childrenservices.org

☎ 440-329-5340



TABLE OF CONTENTS

03 Leadership

04 Director's Message

05 Community Support
and Engagement

06 Revenue and
Expenses

ADDENDUM 2022 CQI Report and Data

LEADERSHIP IN CHILD PROTECTION

Mission

In partnership with the community, the staff, foster parents and volunteers of Lorain County Children Services are committed to the safety and well-being of abused, neglected and dependent children and will provide the highest quality protection, permanence and prevention services to children and families.

Values

We believe children do best in a family / We believe a child should be better off because of our involvement / We believe we should be involved with a child only for as long as needed / We value the child as our client / We value keeping siblings together / We value a diverse and inclusive workspace, and respect the diversity and equity needs of the families and children we serve / We value maximizing resources to achieve the best outcomes we can as timely as possible / We value being a trauma informed agency / We value seeing our children to ensure safety / We value acting with urgency in our work with children / We value high- expectations for our staff, foster families, and volunteers to accomplish the best outcomes for our children that we can / We value independent and critical thinking / We value that every child deserves to safely grow up in a family where they are valued, protected and have the opportunity for life-long well-being / We value continuous improvement and accept change / We value our collaborative role within the community's safety net for children.

Board and Leadership (2022)

Jim Miller, Board Chair
Andrew Lipian, Board Vice Chair
Christina Doran, Board Secretary
Mallory Santiago
Kenneth Glynn
Martin Heberling
Lee Armbruster
Dan Gross
Tamika Bonilla
Tawana Jackson
Tamara Newton

Kristen Fox Berki, MSSA, LISW, Executive Director

DIRECTOR'S MESSAGE

Over the span of my career, our child protection system has always evolved as community conditions changed, perspectives were expanded, new social work methods were researched and developed, and resources changed.

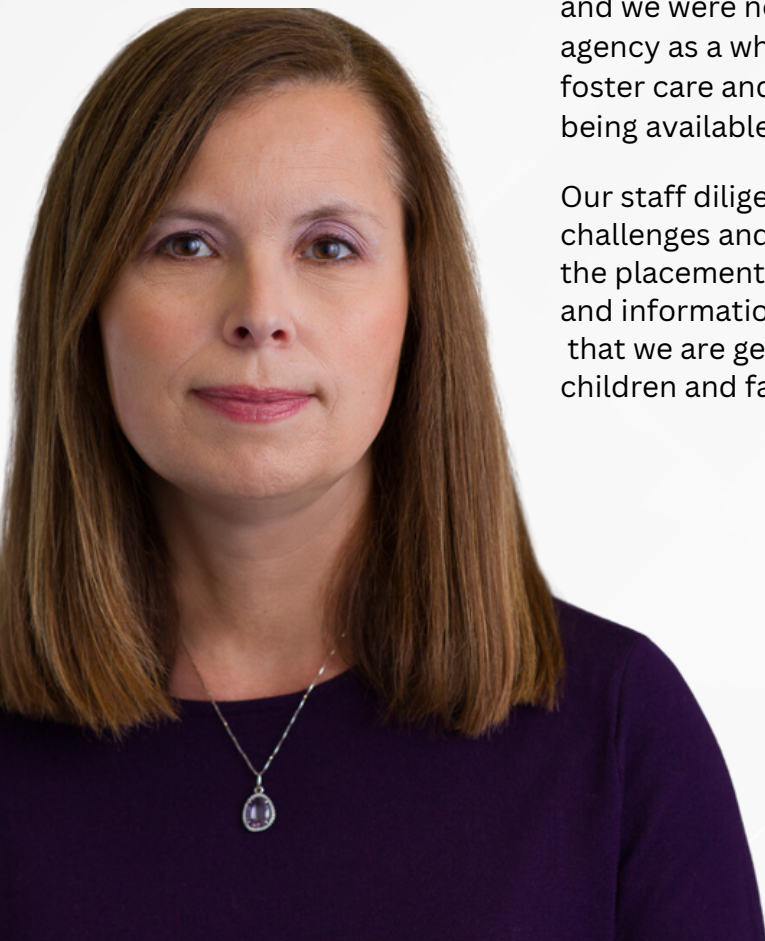
Our mission, collaboratively developed with community participation, has always guided us through change, challenges and opportunities because providing the highest quality services also requires a commitment to continuous quality improvement and strong community collaboration. This was never more true than it was in 2022.

Child protection agencies across the country were dually impacted by a post-pandemic workforce crisis along with a placement crisis and we were not immune. This created unique pressure on the agency as a whole since a lack of staff can lead to longer stays in foster care and longer stays in foster care leads to less families being available for children entering custody.

Our staff diligently worked on new solutions to these new challenges and during 2022 staffing improved and plans to address the placement crisis were being strategically developed. The data and information in the CQI portion of this Annual Report shows that we are getting the outcomes our community expects and our children and families deserve.

Our county has always prioritized the safety and well-being of its children and families. This sense of commitment and caring was continuously expressed in 2022 through donations of experiences, gifts, Easter baskets, quilts, duffle bags, and so much more for the direct benefit of the children we serve.

Protecting children from abuse and neglect is a team effort and we certainly appreciated being on your team. Our children are safe, our families are connected to resources, and their well-being is attended to thanks to the strong partnership between LCCS and our community.



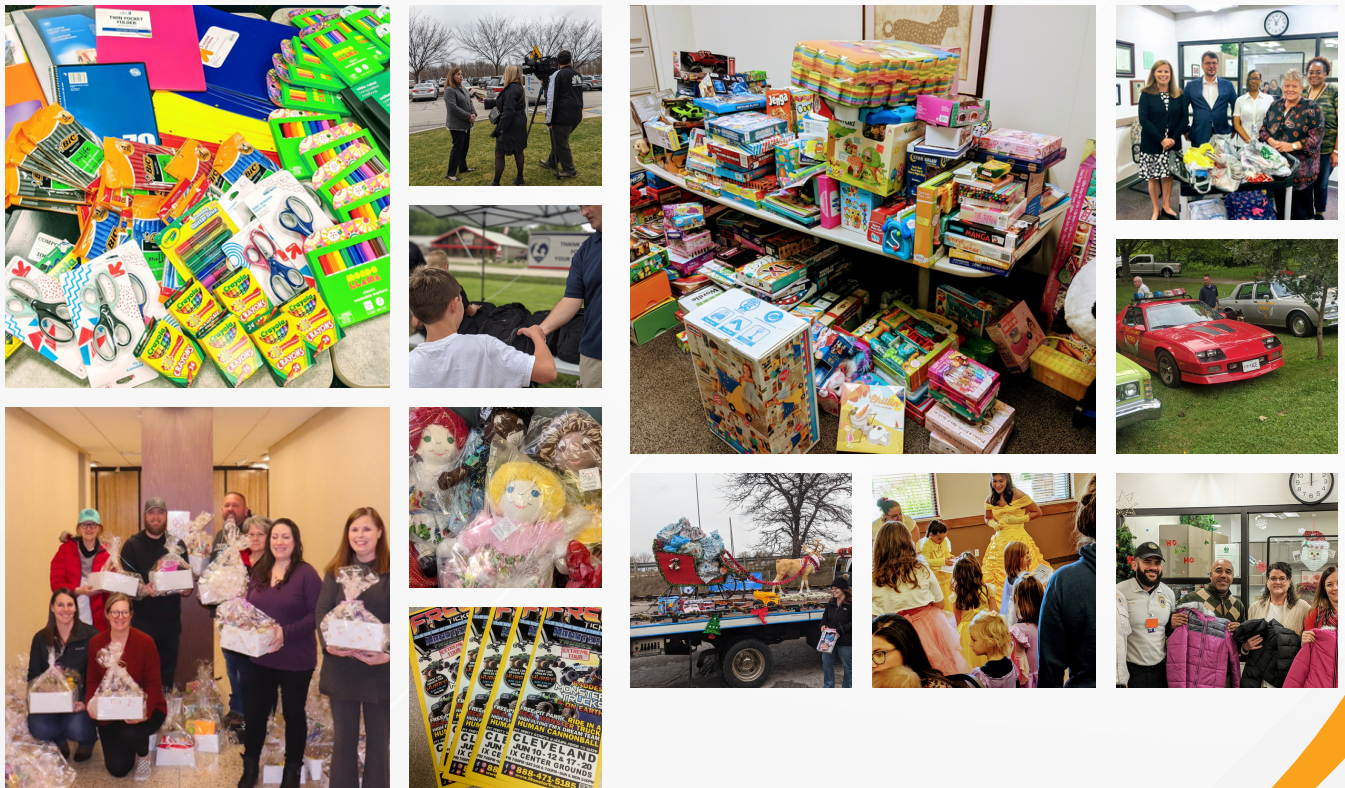
COMMUNITY SUPPORT

Lorain County Children Services plays a critical role in ensuring the safety and well-being of children and families. However, we cannot succeed without the support of the community.

The value of community support cannot be overstated. It provides a platform for building relationships and partnerships that create an impact beyond the single act of donating.

LCCS relies on donations to meet needs of our children and families not able to be covered with public funds. By building strong relationships with the community, our families receive wonderful donations, like Christmas gifts, summer camp experiences, handmade blankets, pajamas, duffel bags, Easter baskets and personal care kits. The sense of trust and transparency built through these community connections also further enhances LCCS' ability to do its work well. We are more effective for having strong community support.

Thank you to the dozens of businesses, churches, civic groups, schools and classrooms and other organizations who made a tremendous impact in 2022.



2022 REVENUE AND EXPENSES

REVENUE

Children Services Levy	\$11,528,726.81
Federal Reimbursements	\$6,543,074.38
Title IV-E	\$1,089,807.94
Title IV-B	\$ 138,767.00
Caseworker Visits/Activity	\$5,152,433.57
Social Security	\$ 162,065.87
State Reimbursements	\$3,179,082.65
Child Welfare Subsidy	\$2,693,480.35
Multi-System Youth Funding	\$ 439,901.66
Child Support	\$45,700.64
Other Local	\$ 424,710.45
TOTAL 2022 REVENUE	\$21,675,594.29



EXPENDITURES

Casework Services to Children and Families	\$14,913,810.96
Services to Children in Placement	\$5,417,020.72
Services to Children and their Families	\$3,127,117.52
Facilities, Vehicles, Other	\$1,582,870.71
TOTAL 2022 EXPENDITURES	\$25,094,819.91